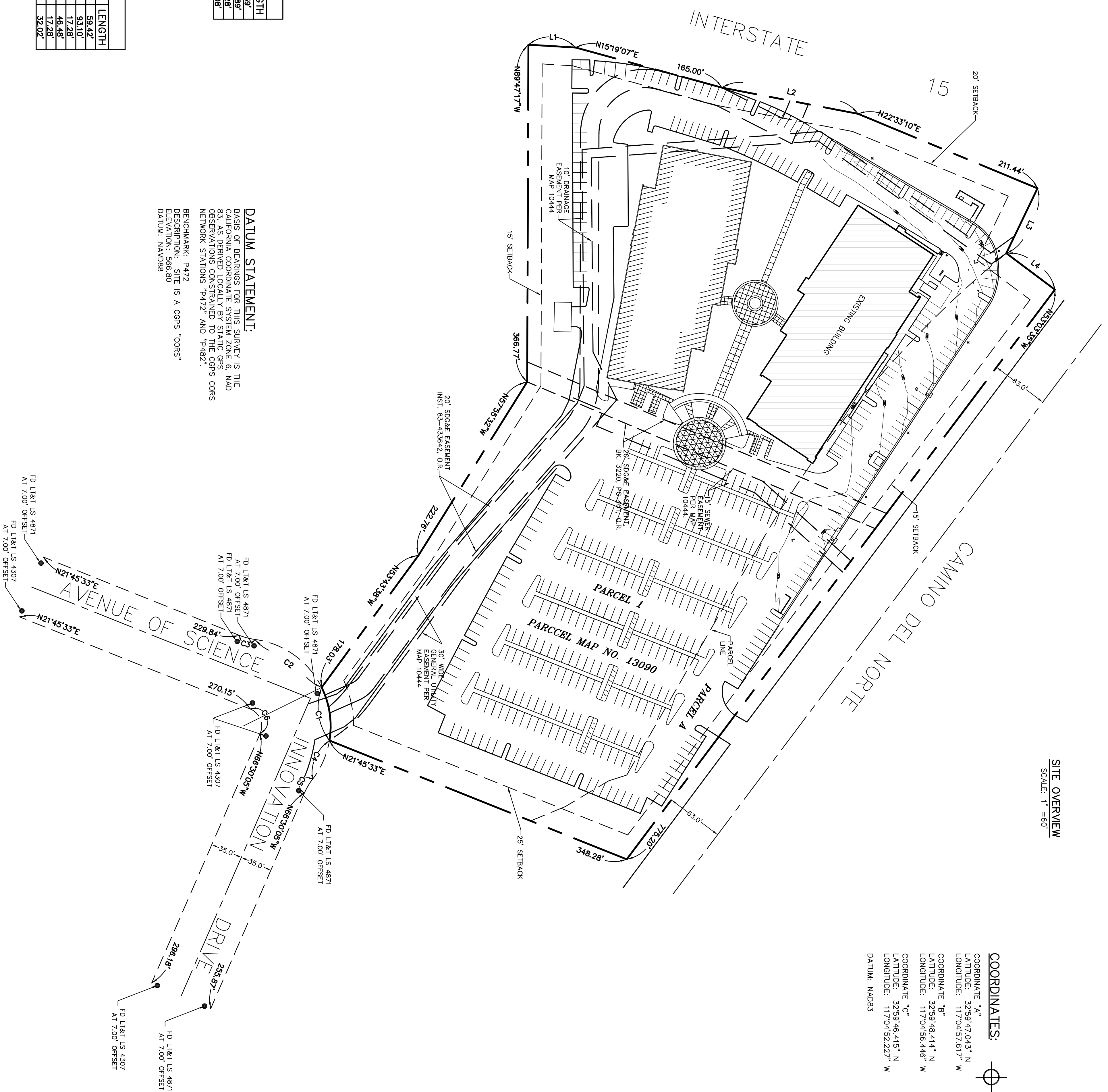


# T-MOBILE 06451 BROADCOM

SAMPLE  
SAMPLE

SITE OVERVIEW  
SCALE: 1" = 60'



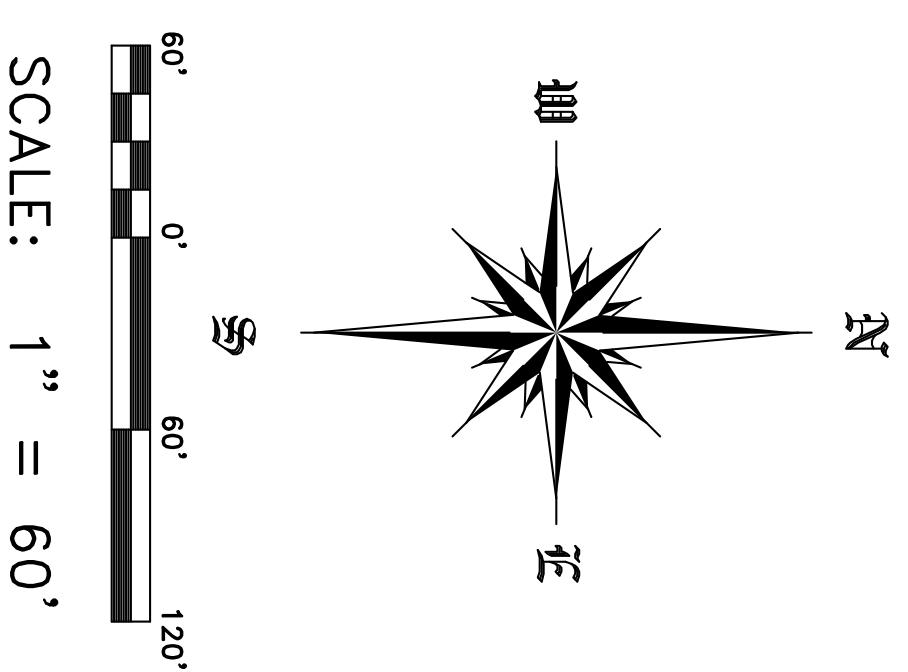
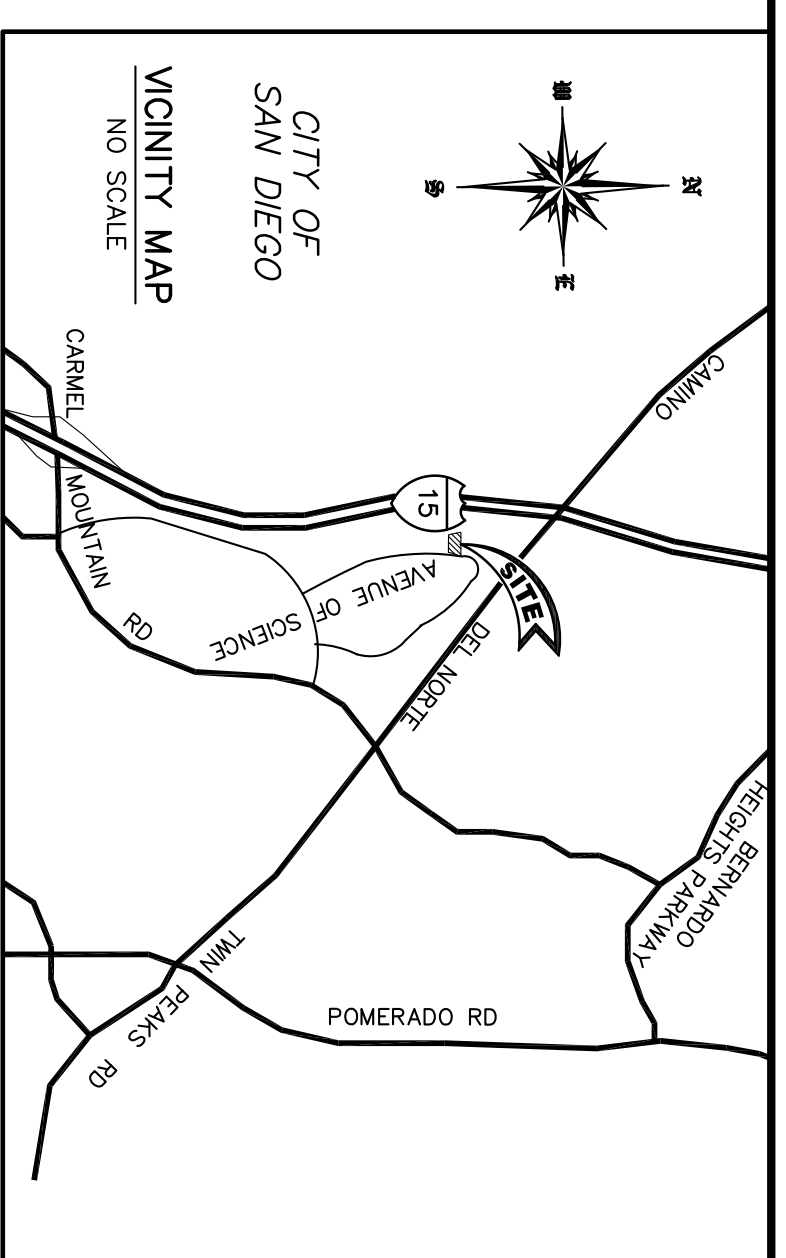
**COORDINATES:**

COORDINATE "A"  
LATITUDE: 32°59'43.043" N  
LONGITUDE: 117°04'57.617" W

COORDINATE "B"  
LATITUDE: 32°59'48.414" N  
LONGITUDE: 117°04'56.446" W

COORDINATE "C"  
LATITUDE: 32°59'46.415" N  
LONGITUDE: 117°04'52.227" W

DATUM: NAD83



**IMPROVEMENT NOTE**  
AREAS SHOWN ON THIS SHEET, LOCATED OUTSIDE OF THE PROJECT AREA DETAIL, AS SHOWN ON THE SITE PLAN, ARE NOT TO BE CONSIDERED PART OF THE PROJECT. THESE AREAS HAVE BEEN SHOWN HEREON BASED ON THE SITE PLAN PROVIDED BY MITCHELL J ARCHITECTURE.

**SETBACK NOTE**  
THE SETBACKS SHOWN HEREON HAVE BEEN TAKEN FROM THE SITE PLANS PROVIDED BY MITCHELL J ARCHITECTURE.

**BOUNDARY NOTE:**  
THE BOUNDARY SHOWN HEREON IS BASED ON RECORD INFORMATION AS COLLECTED FROM THE ASSESSOR'S PARCEL MAP. IT IS NOT THE RESULT OF A COMPLETE BOUNDARY SURVEY.

**LEGAL DESCRIPTION:**  
PARCEL 1 AND PARCEL A, IN THE CITY OF SAN DIEGO, COUNTY OF SAN DIEGO, STATE OF CALIFORNIA AS PER MAP ON FILE IN THE OFFICE OF THE COUNTY RECORDER OF SAID COUNTY AS PARCEL MAP NUMBER 13090.

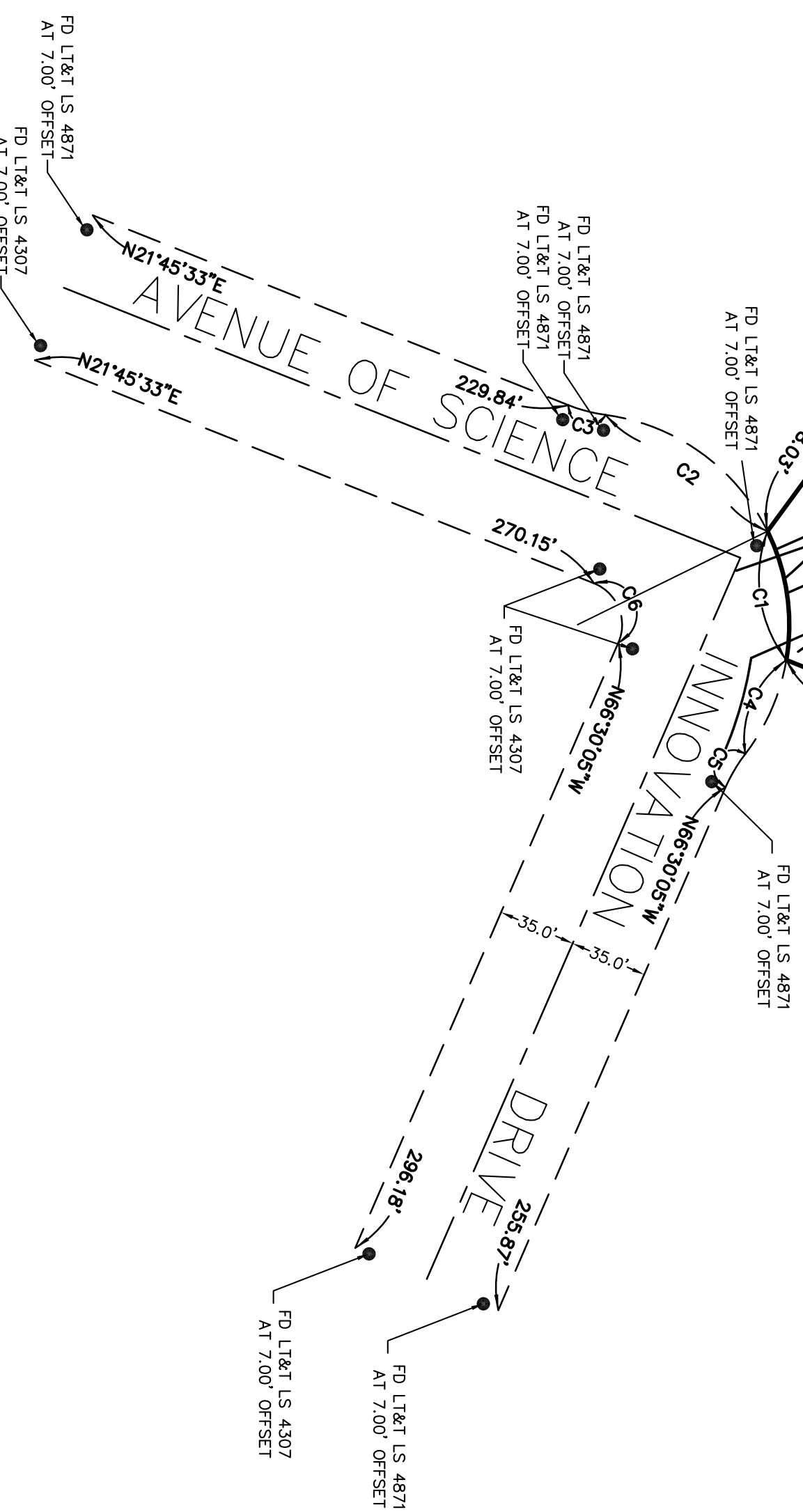
**TITLE REPORT NOTE**  
A TITLE REPORT WAS UNAVAILABLE FOR REVIEW AT THE TIME OF SURVEY THEREFORE ONLY EASEMENTS SHOWN ON PARCEL MAP NUMBER 13090 WHICH CONTAIN PLOTTABLE COURSES HAVE BEEN SHOWN HEREON.

DATE OF SURVEY  
SEPTEMBER 14, 2011

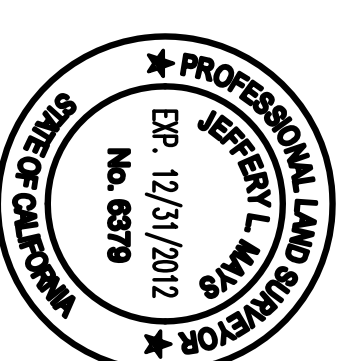
LINE	BEARING	LENGTH
L1	N03°24'56"E	51.39
L2	N10°53'06"E	150.89
L3	N8°41'8"22"W	78.28
L4	N9°51'06"E	86.08

CURVE	DELTA	RADIUS	LENGTH
C1	Δ=35°07'08"	95.00'	59.42'
C2	Δ=58°09'08"	95.00'	93.10'
C3	Δ=14°08'28"	70.00'	17.28'
C4	Δ=26°02'02"	95.00'	46.48'
C5	Δ=14°08'28"	70.00'	17.28'
C6	Δ=91°44'22"	20.00'	32.02'

**DATUM STATEMENT:**  
BASIS OF BEARINGS FOR THIS SURVEY IS THE CALIFORNIA COORDINATE SYSTEM ZONE 6, NAD 83, AS DERIVED LOCALLY BY STATIC GPS OBSERVATIONS CONFORMED TO THE CGPS NETWORK STATIONS T-412 AND T-462.  
BENCHMARK: P472  
DESCRIPTION: SITE IS A CGPS "CORES"  
ELEVATION: 566.80  
DATUM: NAVD83



JEFFERY L. MAVS  
L.S. NO. 6379



SHEET 1 OF 2	SCALE: 1" = 60'	T-MOBILE 06451 BROADCOM	JRN CIVIL ENGINEERS	REVISIONS
FILE NO. 11548	DATE: 09/19/11			232 AVENIDA FABRICANTE, SUITE 107 SAN CLEMENTE, CALIFORNIA 92672 (949) 248-4685 FAX (949) 248-4687
DRAWN BY: BJK	CHKD. BY: JLM	ADDRESS:	CLIENT:	
		SAMPLE SAMPLE	SAMPLE	

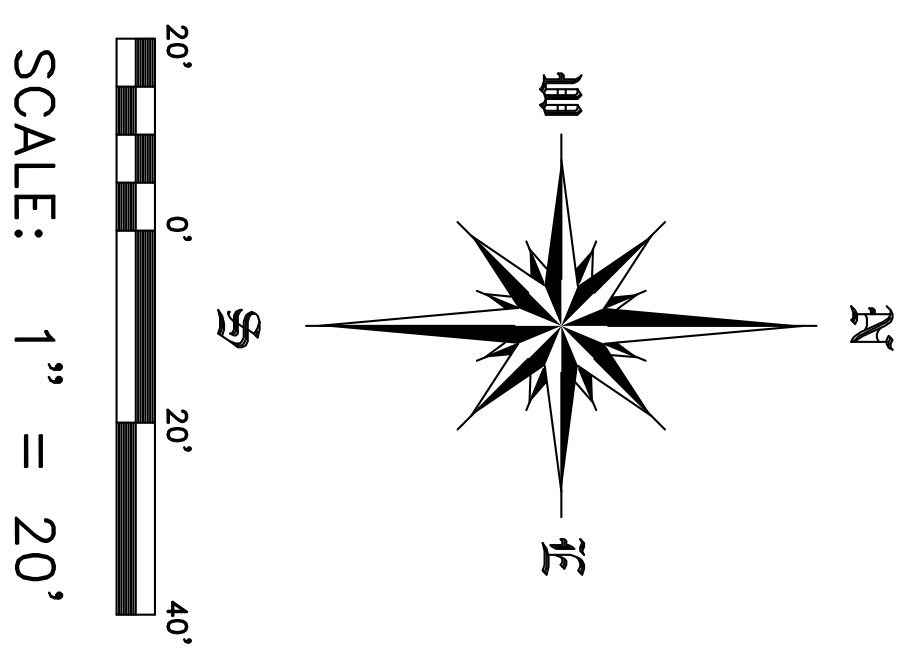
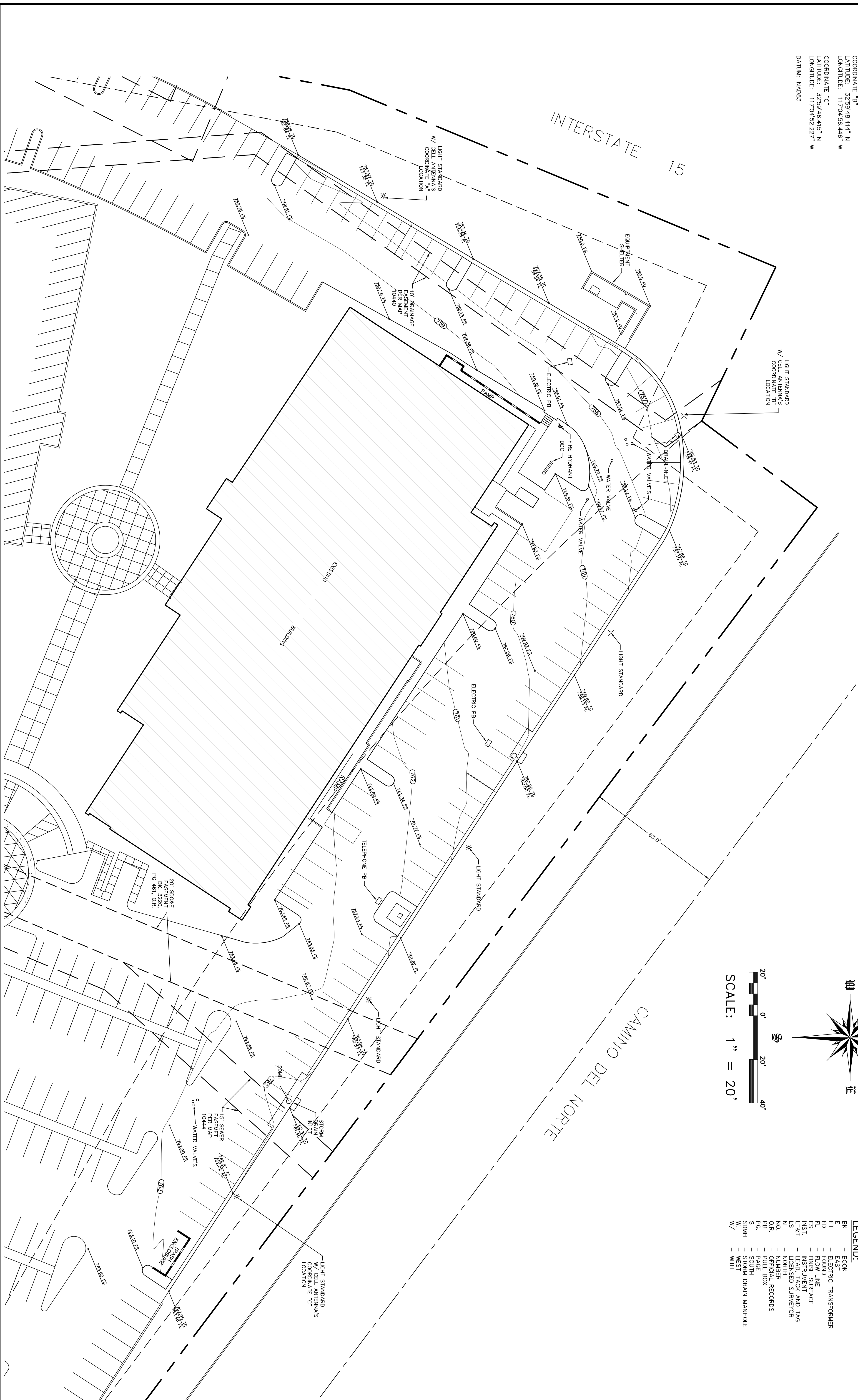
# T-MOBILE 06451 BROADCOM

SAMPLE  
SAMPLE

**COORDINATES:**

COORDINATE "A"  
 LATITUDE: 32°59'47.043" N  
 LONGITUDE: 117°04'57.617" W  
 COORDINATE "B"  
 LATITUDE: 32°59'48.414" N  
 LONGITUDE: 117°04'56.446" W  
 COORDINATE "C"  
 LATITUDE: 32°59'46.415" N  
 LONGITUDE: 117°04'52.227" W  
 DATUM: NAD83

**PROJECT AREA DETAIL**  
 SCALE: 1" = 20'



- LEGEND:**
- BK — BOOK
  - ET — EAST
  - FT — ELECTRIC TRANSFORMER
  - FL — FLOW LINE
  - FS — FINISH SURFACE
  - INST — INSTRUMENT AND TAG
  - LD — LIGHTED SURVEYOR
  - N — NORTH
  - NO. — NUMBER
  - OR. — OFFICIAL RECORDS
  - PB — PALE BOX
  - PS. — PUBLIC
  - S — SOUTH
  - S DMH — STORM DRAIN MANHOLE
  - W/ — WITH

SHEET 2  
OF 2  
FILE NO.  
11548

SCALE: 1" = 20'  
 DATE: 09/19/11  
 DRAWN BY: BJK  
 CHKD. BY: JLM

**T-MOBILE 06451 BROADCOM**  
 ADDRESS: SAMPLE  
 CLIENT: SAMPLE

**JRN CIVIL ENGINEERS**  
 232 AVENIDA FABRICANTE, SUITE 107  
 SAN CLEMENTE, CALIFORNIA 92672  
 (949) 248-4685 FAX (949) 248-4687

REVISIONS